

HOMOGENIZER PRESSURE GAUGE WITH TRANSMITTER



IPS-PG-18



SPECIAL FEATURES

- C & E APPROVED PRESSURE TRANSMITTER.
- LOCAL DISPLAY WITH 4 to 20 mA OUTPUT FOR PLC/PID AND DATA LOGGERS.
- SOLID FRONT CASE FOR SAFETY
- JELLY FILLED MOVEMENT FACILITATE USAGE IN VIBRATION ZONES TO AVOID DAMAGES TO ITS MECHANISM.
- SUITABLE FOR HOMOGENIZER MACHINES.
- STANDARD FOLLOWED IN GENERAL EN 837-3.

APPLICATIONS

THESE GAUGES ARE BEING USED IN APPLICATIONS WHERE HYGIENE IS OF PRIME IMPORTANCE LIKE DAIRY, FOOD, ICE CREAM, BEVERAGES, PHARMACEUTICAL INDUSTRIES & STERILIZATION.

SPECIFICATIONS

STANDARD VERSION : 100 mm

PRESSURE TRANSMITTER

Input Pressure	: Refer range table
Type	: Gauge
System	: 2 Wire
Supply	: 24 VDC
Output	: 4-20 mA
Accuracy	: 0.5% of FS
Ambient Temperature	: 0 to 50°C
Process Temperature	: -25 to 80°C
Process Connection	: Refer options
Electric Wiring	: DIN connector
Response Time	: 50 mSec (Typical)
Sensing Element	: AISI 316L

HOMOGENIZER PRESSURE GAUGE

Accuracy	: ±1.6% of F. S.
Ambient temperature	: - 25°C to + 65°C
Process temperature	: -25 to 80°C
Operating pressure	: 75% of Scale Value
Mounting	: Direct Bottom
Case & Bezel	: AISI 304 SS, Solid Front, Bayonet Type
Bourdon	: AISI 316L SS
Socket	: AISI 316L SS (Directly Welded to Case)
Movement	: AISI 304 SS (Jelly filled)
Joints	: Tig Argon Arc Welding
Protection	: IP 65
Dial	: Aluminum, black graduation on white background
Pointer	: Aluminum, black coloured micrometer zero adjustable
Window	: Shatterproof / Safety Glass
Blow off Disc	: AISI 304 SS
Gasket & 'O' Ring	: Neoprene
Sealing liquid	: Food Grade Oil

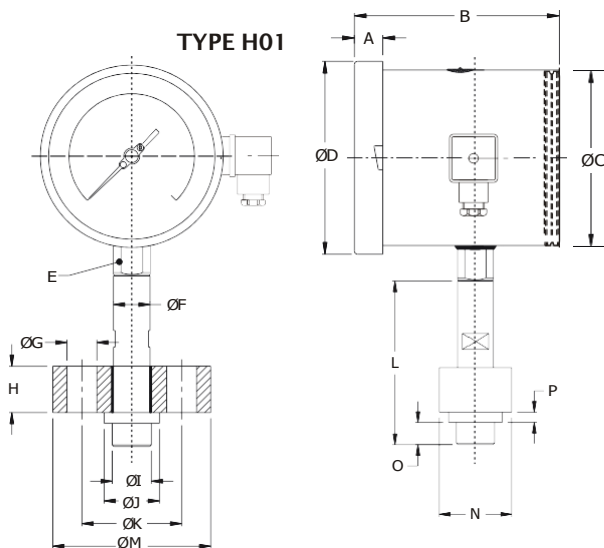
Temperature effect:

The variation of indication caused by effects of temperature is to be calculated by below formula; which is to be added in the specified accuracy while measurement :-

Formula : $\pm 0.08 \times (t_2 - t_1) \% \text{ of F. S.}$

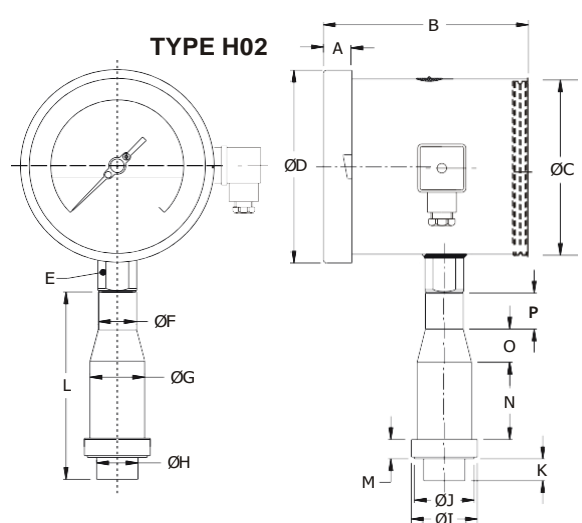
where t_1 = reference temperature (+20°C) and t_2 = ambient temperature in °C.

DIMENSIONS - STANDARD VERSION



FLANGE CONNECTION

NS	A	B	ØC	ØD	E	ØF	ØG	H	I	ØJ	ØK	L	ØM	N	O	P	Weight in gram (With Box)
100	12.5	89	100	111	22	22	18	28	23.5	33.3	60	102	95	45	13	6.5	1500.0



WITHOUT FLANGE CONNECTION

NS	A	B	ØC	ØD	E	ØF	ØG	ØH	ØI	ØJ	K	L	M	N	O	P	Weight in gram (With Box)
100	12.5	89	100	111	22	21.5	31	23.5	37.5	34	12	106.5	11	44.5	19	20	1400.0



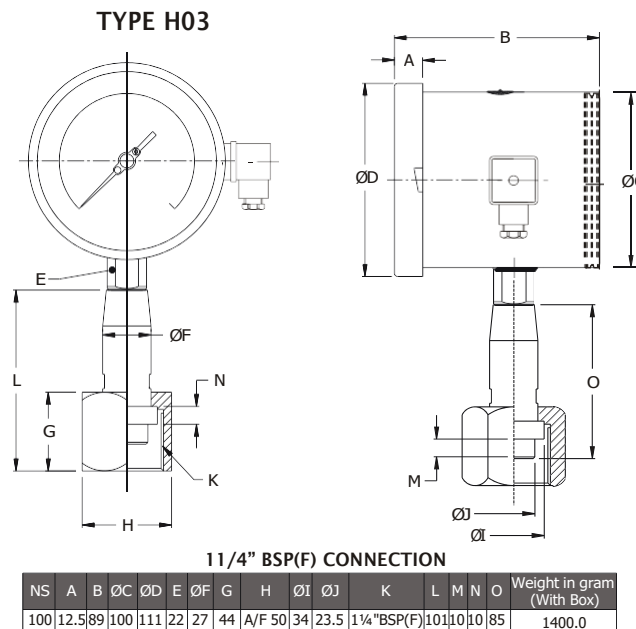
Industrix Precise Solutions Private Limited

Room No – 303, Bhumika Residency, Plot No-21, Sector-20, Roadpali, Kalamboli, Panvel (Tal.), Raigad (Dist.), Maharashtra, India – 410218.

Mobile: +91 99309 98399 / +91 99674 97447

E-mail: admin@ipspl.in / sales@ipspl.in Website: www.ipspl.in

CIN : U52399MH2021PTC368555



Notes : • Drawings are not to scale. • All Dimensions are in mm. • NS = Nominal Size

HOW TO ORDER BASIC MODEL

CODE

NOMINAL SIZE

F

TYPE OF MOUNTING

100 mm

2 DIRECT BOTTOM ENTRY

GAUGE CONNECTION

H01

FLANGE

H02

WITH OUT FLANGE (Standard)

H03

1 1/4" BSP (F)

RANGE (in kg/cm² or bar) *Consult factory for price & delivery.

0/160*

0/250*

0/400 (Standard)

0/600*

0/1000*

OPTIONAL EXTRAS

PW FIVE POINT CALIBRATION CERTIFICATE

SX SS TAG PLATE

SJ MAXIMUM READING POINTER WITH PLEXI GLASS

TB HELIUM LEAK TEST

RH CUSTOM DESIGNED DIAL

GH MATERIAL TEST CERTIFICATES*

* MATERIAL TEST CERTIFICATES WILL BE PROVIDED FOR WETTED PARTS ONLY WITH CHEMICAL COMPOSITION TESTING. FOR OTHERS, PLEASE CONSULT FACTORY.

IPS-PS-18

X

X

XXX

0 - 250
kg/cm²

XX

Note : Specifications and dimensions given in this product catalogue represents the state of engineering at the time of printing.
Modifications may take place and materials specified may be replaced by others without prior notice.



Industrix Precise Solutions Private Limited

Room No – 303, Bhumika Residency, Plot No-21, Sector-20, Roadpali, Kalamboli, Panvel (Tal.), Raigad (Dist.), Maharashtra, India – 410218.

Mobile: +91 99309 98399 / +91 99674 97447

E-mail: admin@ipspl.in / sales@ipspl.in Website: www.ipspl.in

CIN : U52399MH2021PTC368555